



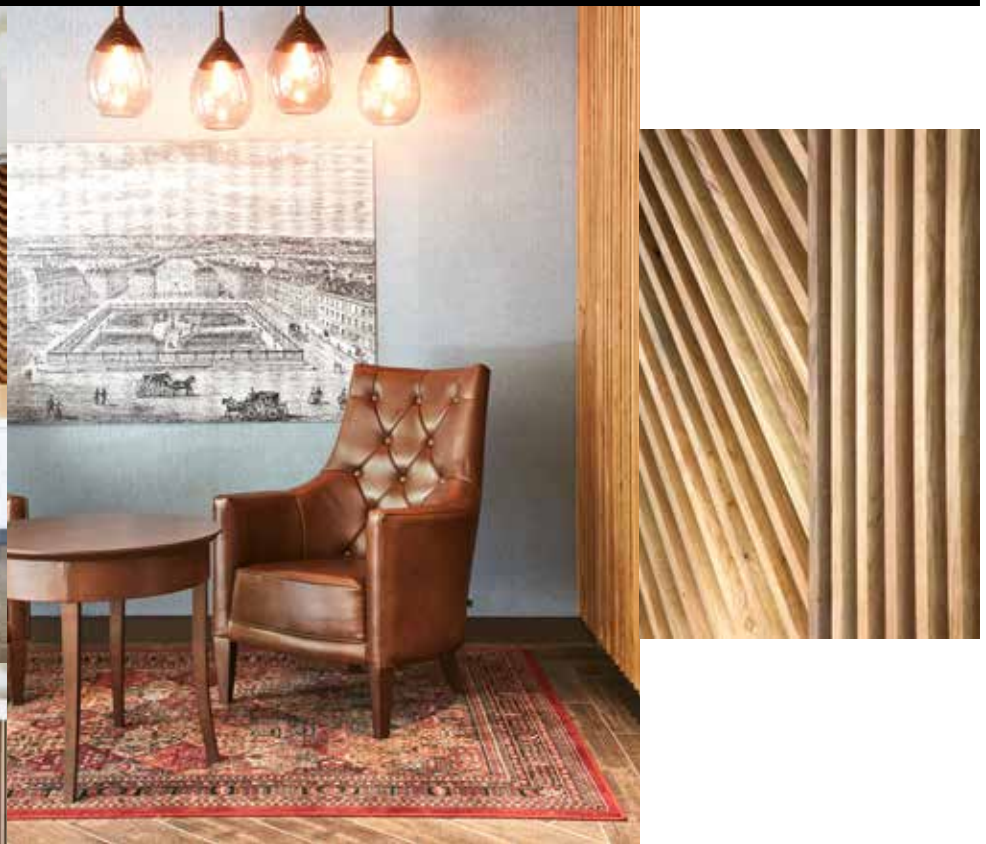
# SOHO SQUARE

---

*Steeped in history, surrounded by stylish shops  
and restaurants, rubbing shoulders with pioneers;  
Soho will always be an enviable place to work in central London.*

---

# SERIOUSLY SOHO



---

*Distinctive reception with faux-wood  
stone flooring. In the heart of Soho.  
Available now.*

---



---

*Flexible floorplates offer a space to accommodate all industries,  
with an open-plan design encouraging collaborative working  
and easy interaction.*

---

## FASHION MEETS FUNCTION

---

*Modern and bright, 27 Sobo Square promises the latest in London. With Juliet balconies overlooking the square and contemporary styling throughout, this address combines comfort with aesthetics.*

---



## ROOM WITH A VIEW

---

*With vistas of Sobo on three sides, this space places you in the heart of the West End. The leafy square unfolds in front of the entrance while historic shops, pubs and restaurants line neighbouring Greek Street.*

---

## A SOCIAL NETWORK

*27 Soho Square places you among London's finest – shops, bars, restaurants, theatres and more. From cocktails at 68 and Boston to Venetian dishes at award-winning Polpo, no-one ever tires of Soho's hidden delights.*

*With Tottenham Court Road station just 4 minutes away, travel connections can whisk you to any corner of the capital within moments. The completion of Crossrail in 2018 will place Canary Wharf within 12 minutes and Heathrow within just 30.*

### Crossrail journey times from Tottenham Court Road station

Farringdon	3 mins
Liverpool Street	5 mins
Paddington	5 mins
Canary Wharf	12 mins
Stratford	14 mins
Heathrow Central	30 mins
Reading	55 mins

Source: [crossrail.co.uk](http://crossrail.co.uk)

### Eat

- HIX
- Polpo
- Bob Bob Ricard
- Rum Kitchen
- Mildreds
- Wright Brothers
- Andrew Edmunds
- BAO
- Blacklock
- Flat Iron
- NOPI
- MASH
- Blanchette
- Dean Street Townhouse
- Kiln
- Social Eating House
- The Groucho Club

### Drink

- Fernandez and Wells
- Soho Grind
- 68 and Boston
- The Blind Pig
- Cahoots
- Milk & Honey
- The London Gin Club
- Vinoteca

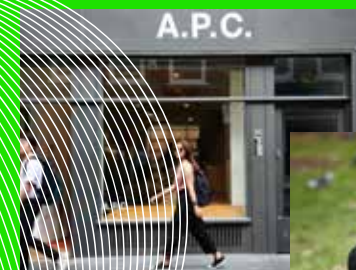
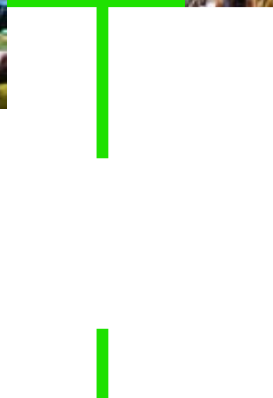
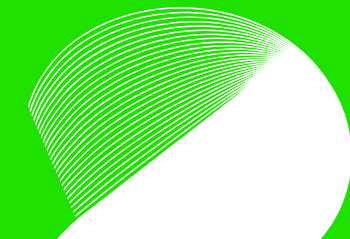
### Do

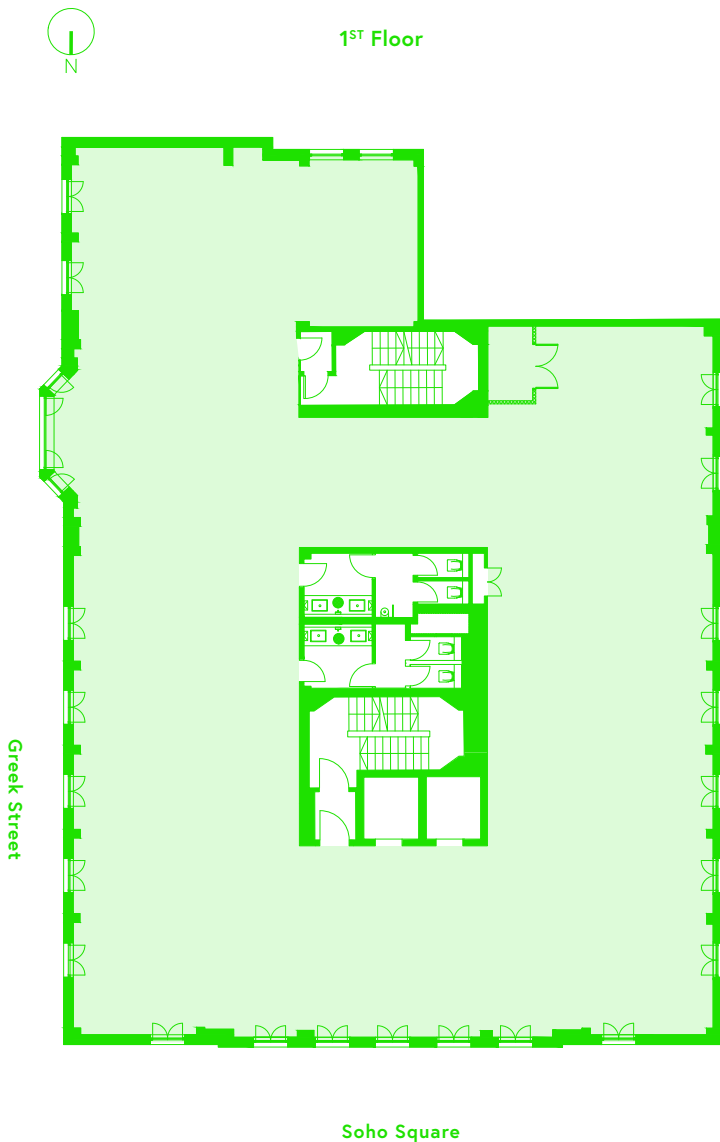
- Tommy Guns
- Aesop
- Albam
- Liberty
- Lina Stores
- Le Labo
- Rapha
- Whole Foods
- Third Space
- Piccadilly Theatre
- Golden Square

### Local Occupiers

- Trip Advisor
- IBIS Capital
- WeWork
- Tech Essence Ltd
- BBH Global
- Tapestry
- Soho House
- King
- Snapchat
- GHD







Floor	Size	Availability
4th	3,438 sq ft / 319 sq m	Q1 2018
3rd	4,881 sq ft / 454 sq m	Q1 2018
1st	4,907 sq ft / 456 sq m	AVAILABLE NOW
Total	13,226 sq ft / 1,229 sq m	

#### SPECIFICATION

- Comprehensively refurbished
- Contemporary upgraded main reception
- Feature bay windows overlooking Soho Square, providing excellent natural light
- Exposed VRF air conditioning with suspended plasterboard rafts
- Fully accessible raised floor
- LED lighting throughout with feature pendant fittings
- Demised WCs
- Showers and secure cycle storage
- EPC rating B

#### CONTACT

**Andrew Okin**

T: 020 7009 2300

E: aokin@edwardcharles.co.uk

**Sean Cunningham**

T: 020 7009 2300

E: scunningham@edwardcharles.co.uk

**Richard Lockhart**

T: 020 7408 1114

E: richard@coh.eu

**Bryan Pontifex**

T: 020 7408 1114

E: bryan@coh.eu



edwardcharles.co.uk



coh.eu

Floor plans are for indicative purposes only and not to scale.

#### Misrepresentation Act

These particulars do not constitute a contract. Prospective occupiers must not rely upon the details herein as statements of facts or representations and must satisfy themselves as to their accuracy. BS3108. September 2017.

**27SOHOSQUARE.CO.UK**