



SOHO SQUARE

Greek Street

Soho Square



FIRST FLOOR

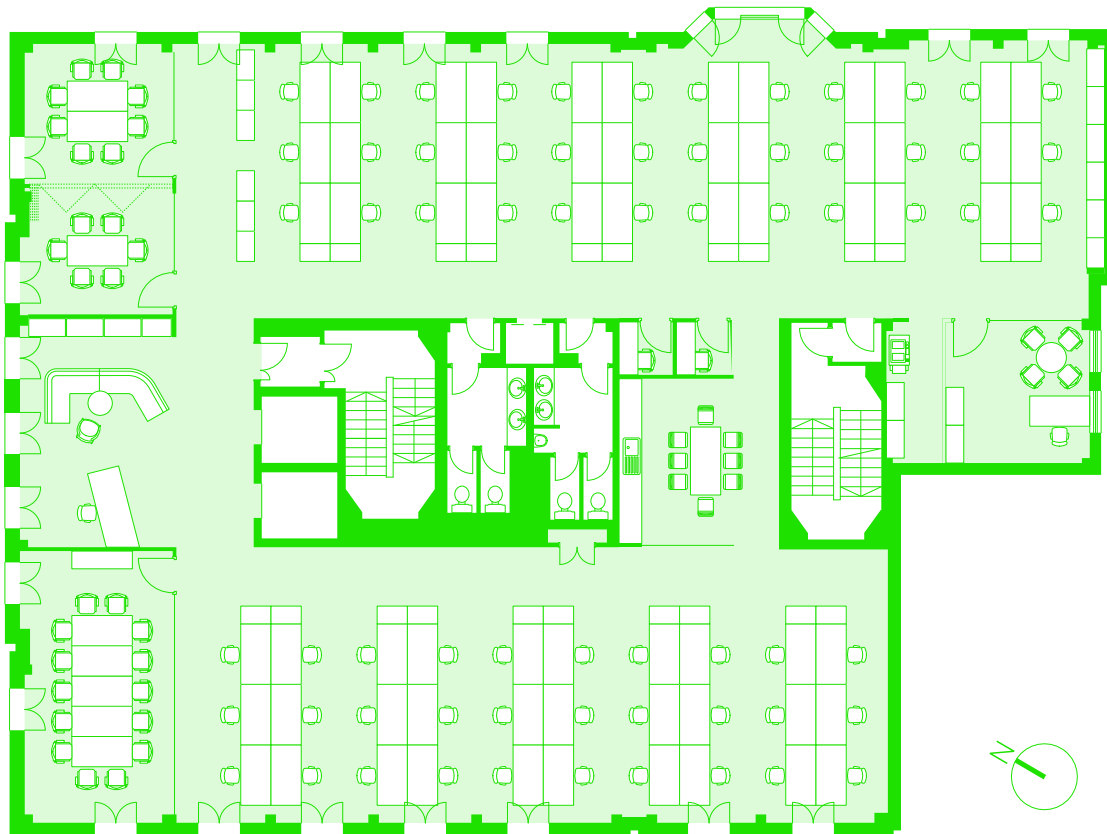
4,907 sq ft / 456 sq m



SOHO SQUARE

Greek Street

Soho Square



FINANCIAL SPACE PLAN

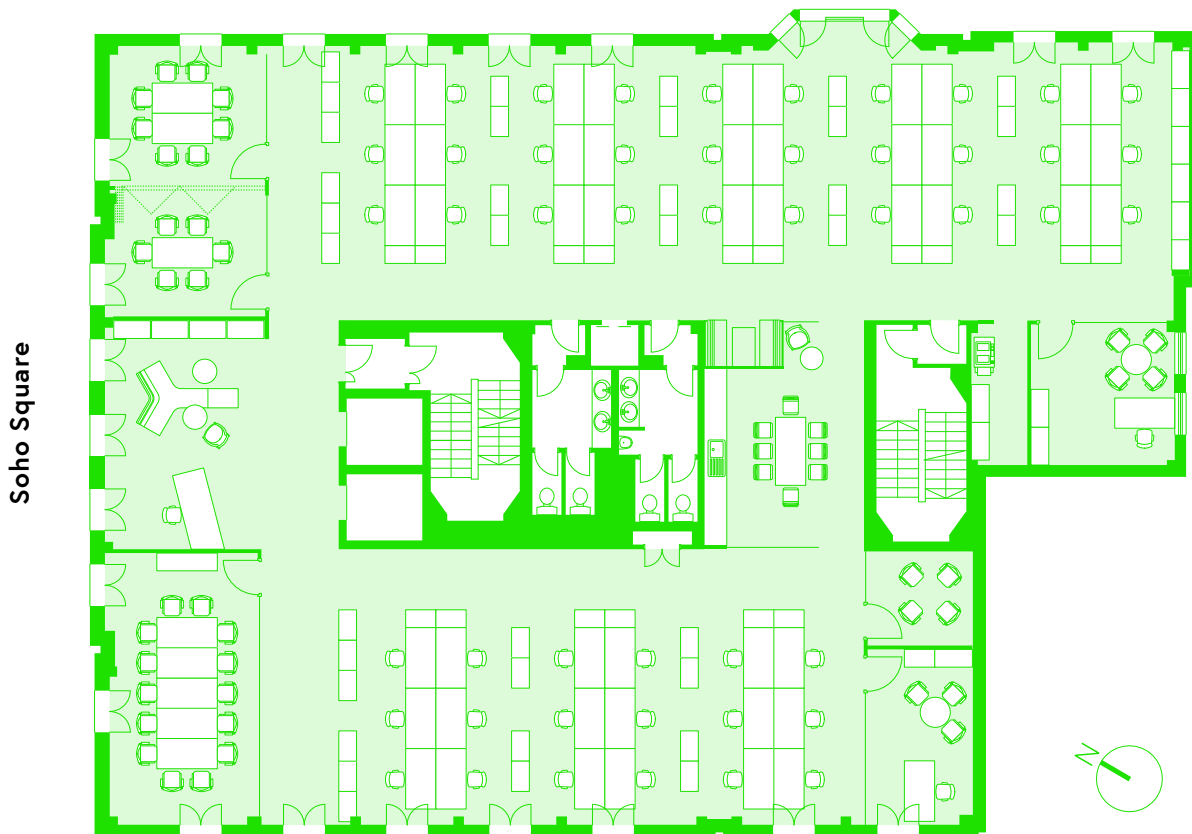
Space summary

• Open plan workstation	66	• Boardroom	14 person
• Single occupancy office	1	• Meeting room	8 person
• Reception	1	• Meeting room	6 person
Total occupancy	68	• Waiting area	1
		• Phone booths	2
		• Teapoint/breakout	1
		• Copy/print area	1



SOHO SQUARE

Greek Street



CORPORATE SPACE PLAN

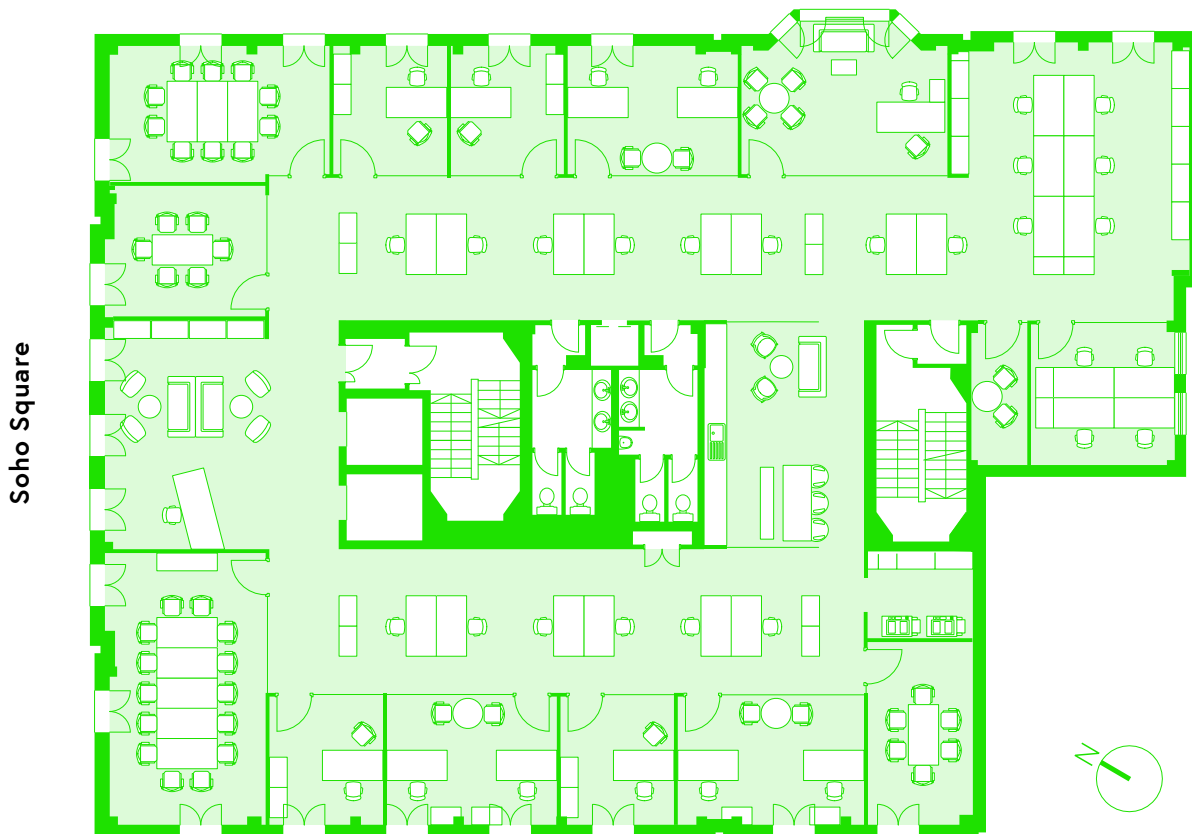
Space summary

• Open plan workstation	48	• Boardroom	14 person
• Single occupancy office	2	• Meeting room	8 person
• Reception	1	• Meeting room	6 person
Total occupancy	51	• Meeting room	4 person
		• Waiting area	1
		• Informal meet booths	1
		• Teapoint/breakout	1
		• Copy/print area	1



SOHO SQUARE

Greek Street



CELLULAR SPACE PLAN

Space summary

• Open plan workstation	20	• Boardroom	14 person
• Single occupancy office	5	• Meeting room	10 person
• 2 person office	3	• Meeting room	6 person
• 4 person office	1	• Waiting area	1
• Reception	1	• Teapoint/breakout	1
Total occupancy	36	• Copy/print area	1